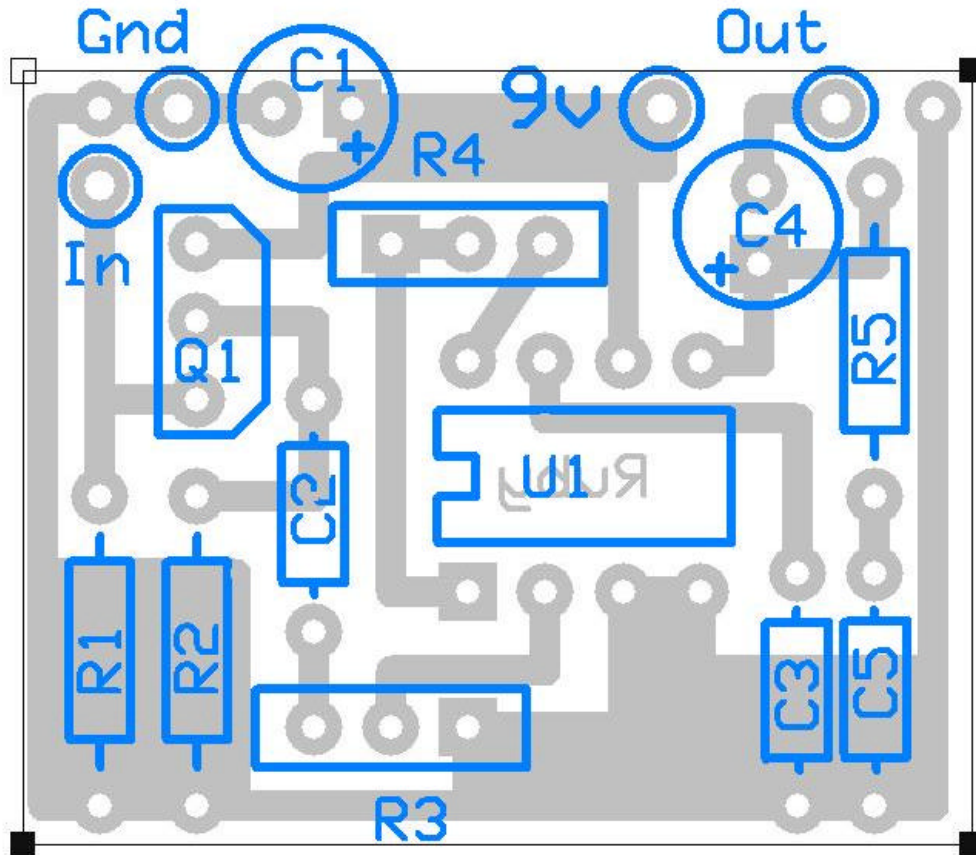


"Ruby" by runoffgroove.com

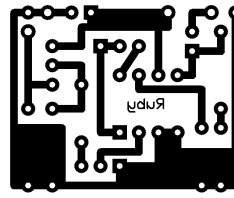
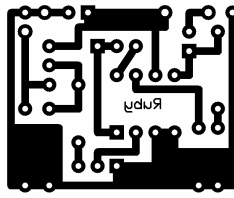
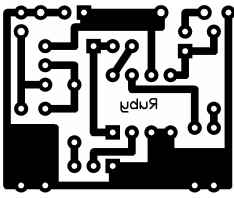
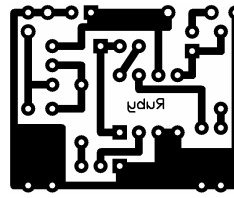
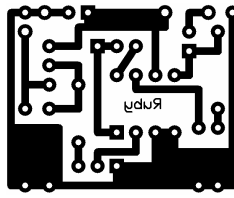
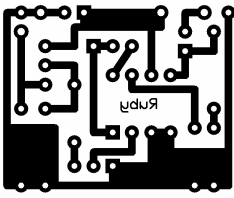
PCB layout by Pablo De Luca (aka Gringo)
Version 1.4 May 11, 2006



Parts List:

Capacitors	Resistors	Semiconductors
C1 100uF	R1 1M5	Q1 MPF102
C2 47n	R2 3k9	U1 LM386
C3 100n	R3 10k B Vol	
C4 220uF	R4 1k B Gain	
C5 47n	R5 10	

Transfers:



Board Dimensions: 31.12mm x 25.4mm (1.225" x 1.0")